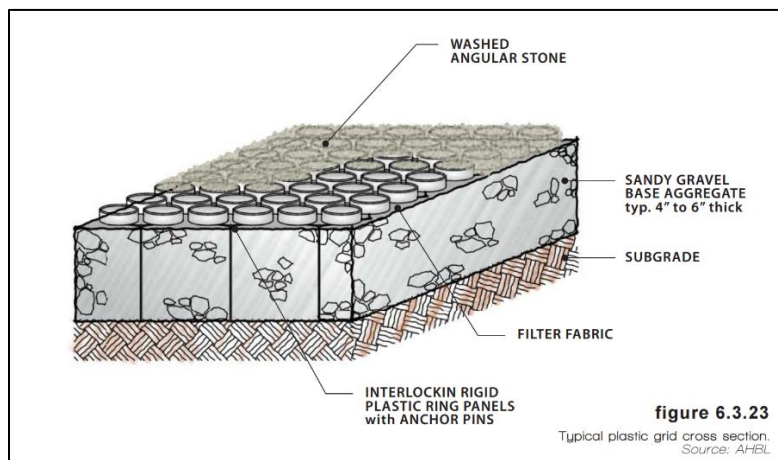


## Module 3.3: Intermediate LID Design: Permeable Pavement

### Section 2: Permeable Pavement Components – Considerations & Criteria

#### Plastic Grids

- Flexible and proprietary
- Series of interlocking plastic or synthetic grid filled with gravel or soil and can be planted with vegetation such as grass
- Largest amount of void space for permeable pavement wearing course layer
- Grids are appropriate for trails, paths, maintenance access roads in parks, and parking lots
- Capable of high vehicle loads
- Best suited for low speeds and infrequent vehicular traffic



*2012 LID Technical Guidance Manual*

- Many systems available. Trade names include (but not limited to): Grassy Pavers, TruGrid, Geoblock, Gravelpave2, Agrablock, GroundGridz, Netpave 50
  - Americans with Disability Act (ADA)—Gravelpave2 was tested to meet required standards by Beneficial Designs, Inc. April 1999
- Grid colors can match aggregate material used and/or grass
- Many grids are 100% recycled HDPE
- Grids can have different structural characteristics
- Sandy gravel material is commonly used for the base aggregate

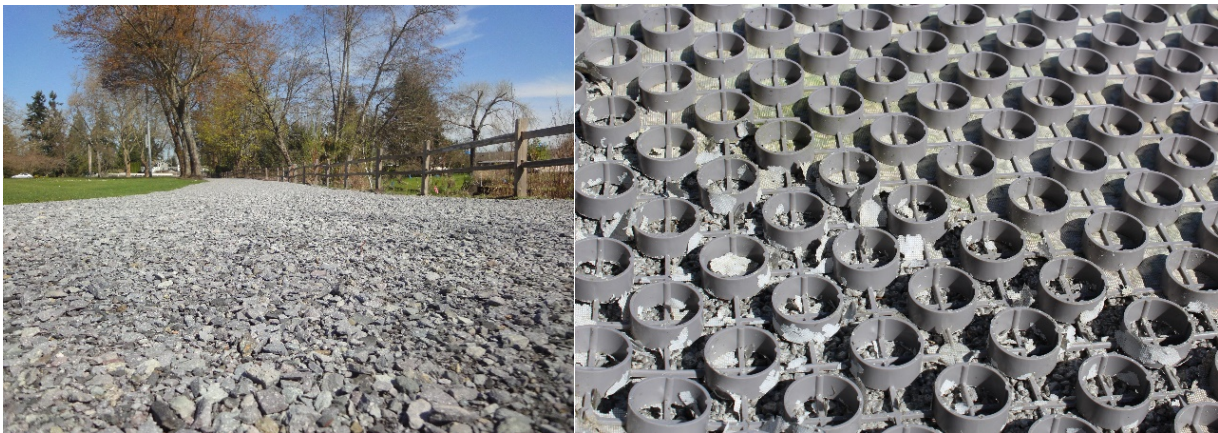
Sieve	% Passing
1"	100
¾"	90-100
3/8"	70-80
#4	55-70
#10	45-55
#40	25-35
#200	3-8

*Specifications for base aggregate/material*

## Grids with Gravel

The wearing course, or top layer, of a gravel grid system can include different types of gravel fill, as long as the gravel is clean, angular, hard, and uniform in size from 3/16 inch to 3/8 inch. Examples of appropriate gravel fill includes:

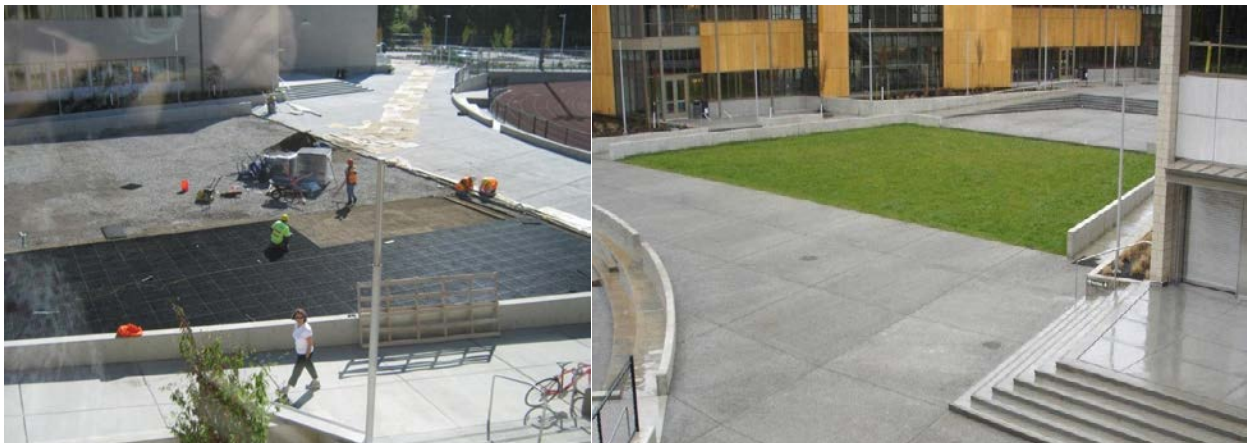
- 3/16" Crushed Granite
- 3/8" Decomposed Granite
- 3/8" Hard Limestone (with 25-30% sharp mason's sand added to maintain porosity)
- 5/16" Carbon Canyon
- 3/8" Sanora Tan
- Sharp Angular Pea Gravel (NOT Rounded Pea Gravel)



*Grid with gravel system as a park access road*

## Grids with Grass

The wearing course of a grid with grass system includes a layer of soil planted with grass. The system works well for overflow parking lots and other low speed areas like fire lanes.



*Grid with grass installation (left) and completed project (right)  
Photo provided by Cascade Design Collaborative*